

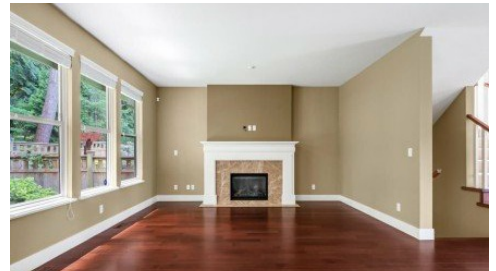
14208 36a Avenue
Surrey, V4P 0C2



HOMELIFE
BENCHMARK
REALTY CORP.

Powered by homes.surreynowleader.com

MLS# R3015388



\$1,995,000

4 Bedrooms | 4 Bathrooms | 3,380 Sqft

Elegant Cape Cod-inspired residence nestled in a stunning natural setting, just a short walk to the scenic Nicomekl River and Golf Course. This expansive 4-bedroom, 4-bathroom family home boasts a chef's kitchen with sleek granite countertops and classic maple cabinetry accented by polished chrome hardware. Luxurious bathrooms feature imported hand-set tile flooring. The spacious primary suite offers its own private deck with sweeping panoramic views. Conveniently located just 7 minutes from elementary schools, 6 minutes to shopping and dining, and with quick access to major highways. Only 12 minutes to Peace Arch Hospital, and a short drive to Crescent Beach and White Rock Beach. Enjoy easy access to the U.S. border perfect for quick trips to Blaine, Washington for gas, groceries & shopping.



HomeLife Benchmark Titus Realty

Phone: (604) 575-5262

HomeLife Benchmark Realty

Office: (604) 531-1111

For full listing details, please scan:

