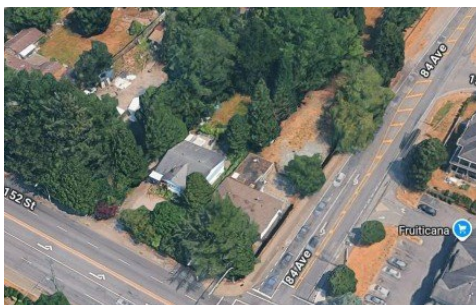


8406 152 Street
Surrey, V3S 3M8



Powered by homes.surreynowleader.com

MLS# R3050933



\$2,100,000

5 Bedrooms | 2 Bathrooms | 2,004 Sqft

Explore the future of redevelopment through Fleetwood's Stage 1 Plan. Starting with a baseline 0.25 FAR, the community evolves effortlessly from low-rise to high-rise living, while the vibrant core boasts 0.3 FAR of active commercial space with potential for greater density. Lively street fronts energize the area, drawing people into a connected urban experience. Ground-level townhomes bring modern urban living to life. Surrey's forward-looking vision ushers in a new chapter: from the bustling Fleetwood Core to the inviting Neighbourhood Commercial districts, every zone is rich with opportunity. Within the Plan Boundary Extension, even a non-conforming duplex offers promise for transformation. For developers and investors alike, this is the moment to help shape Fleetwood's rising skyline.



HomeLife Benchmark Titus Realty

Phone: (604) 575-5262

HomeLife Benchmark Realty

Office: (604) 531-1111

For full listing details, please scan:

